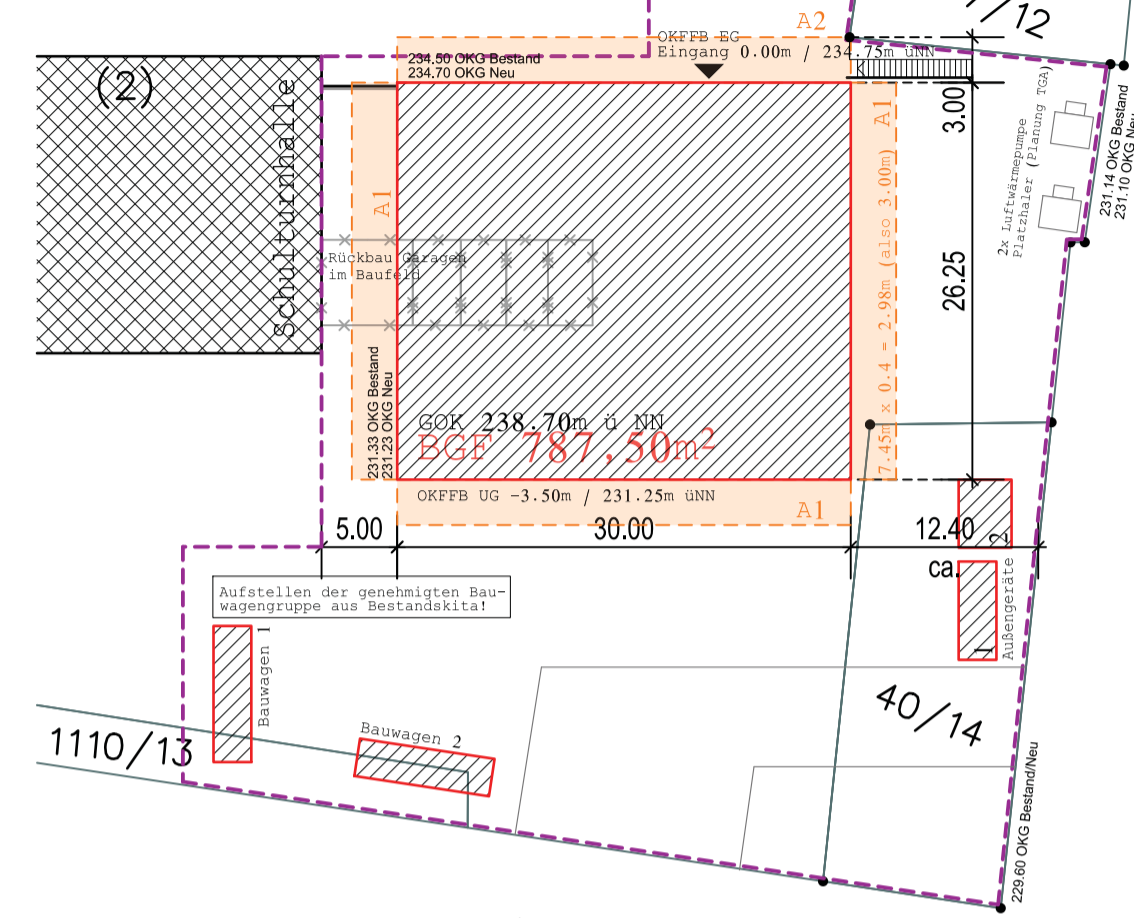




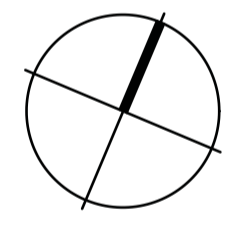
BERECHNUNG DER ABSTANDSFLÄCHEN
 Maß H siehe Ansichten

A1
 $A1 = 0,4 \times 7,45m (H1) = 2,98m$ also 3,00m MINDESTABSTANDSFLÄCHE

A2
 $A1 = 0,4 \times 4,30m (H2) = 1,72m$ also 3,00m MINDESTABSTANDSFLÄCHE



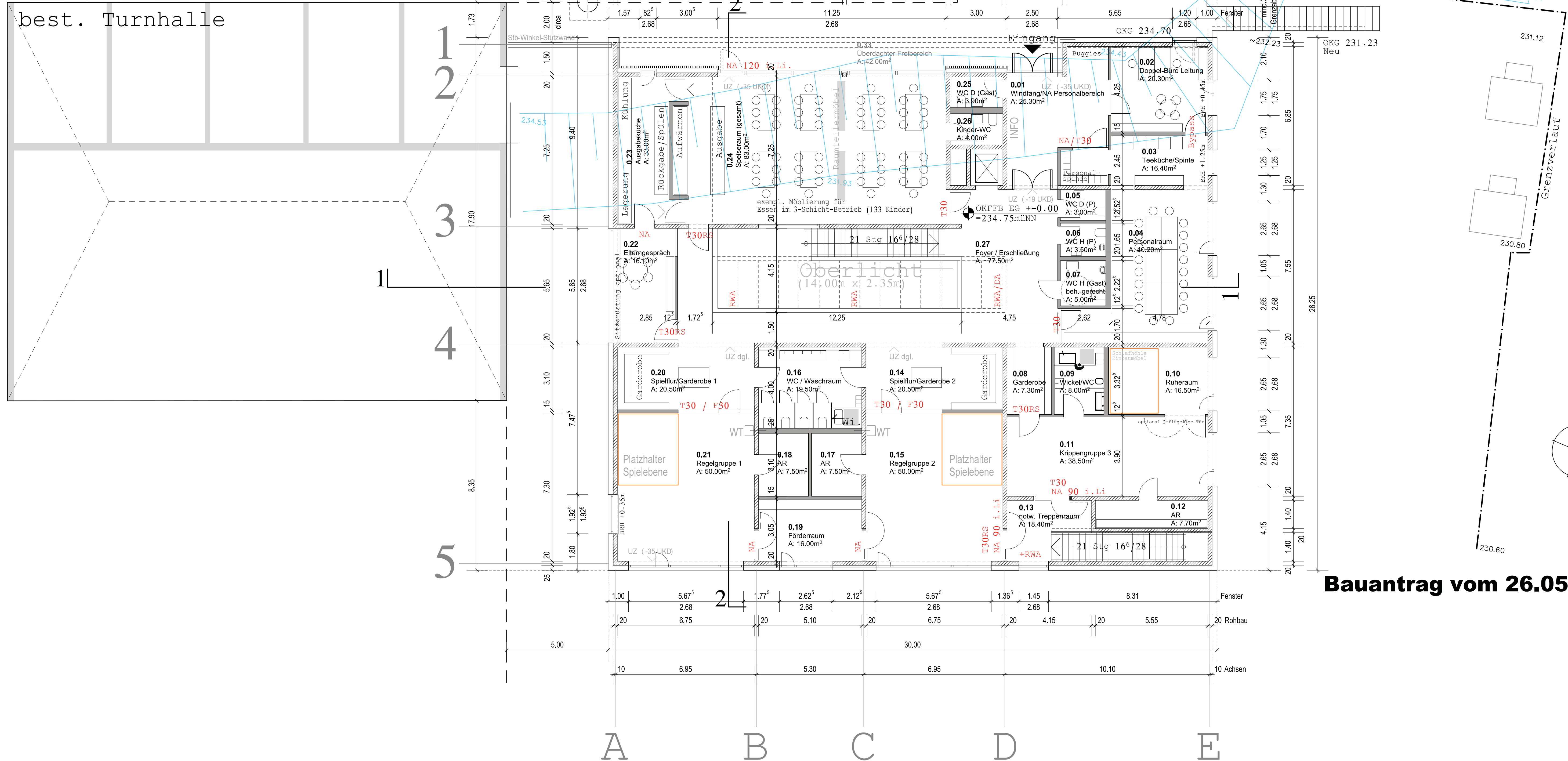
Darstellung der Abstandsflächen



GEMARKUNG: NIEDERWÜRZBACH
 FLUR: 5
 FLURSTÜCKE: 1077/19, 1110/13, 40/14

Bauantrag vom 26.05.23

best. Turnhalle



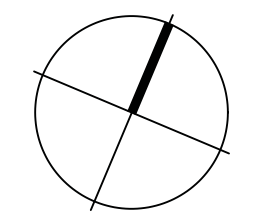
siehe Lageplan Schnittstelle Vorplatz >> HU-Bau Kita

Bestehender Spielplatz wird zurückgebaut und versetzt (Planung Stadt intern!)

Freianlage siehe sep. Planung!

Schulhofebene

Bauantrag vom 26.05.23

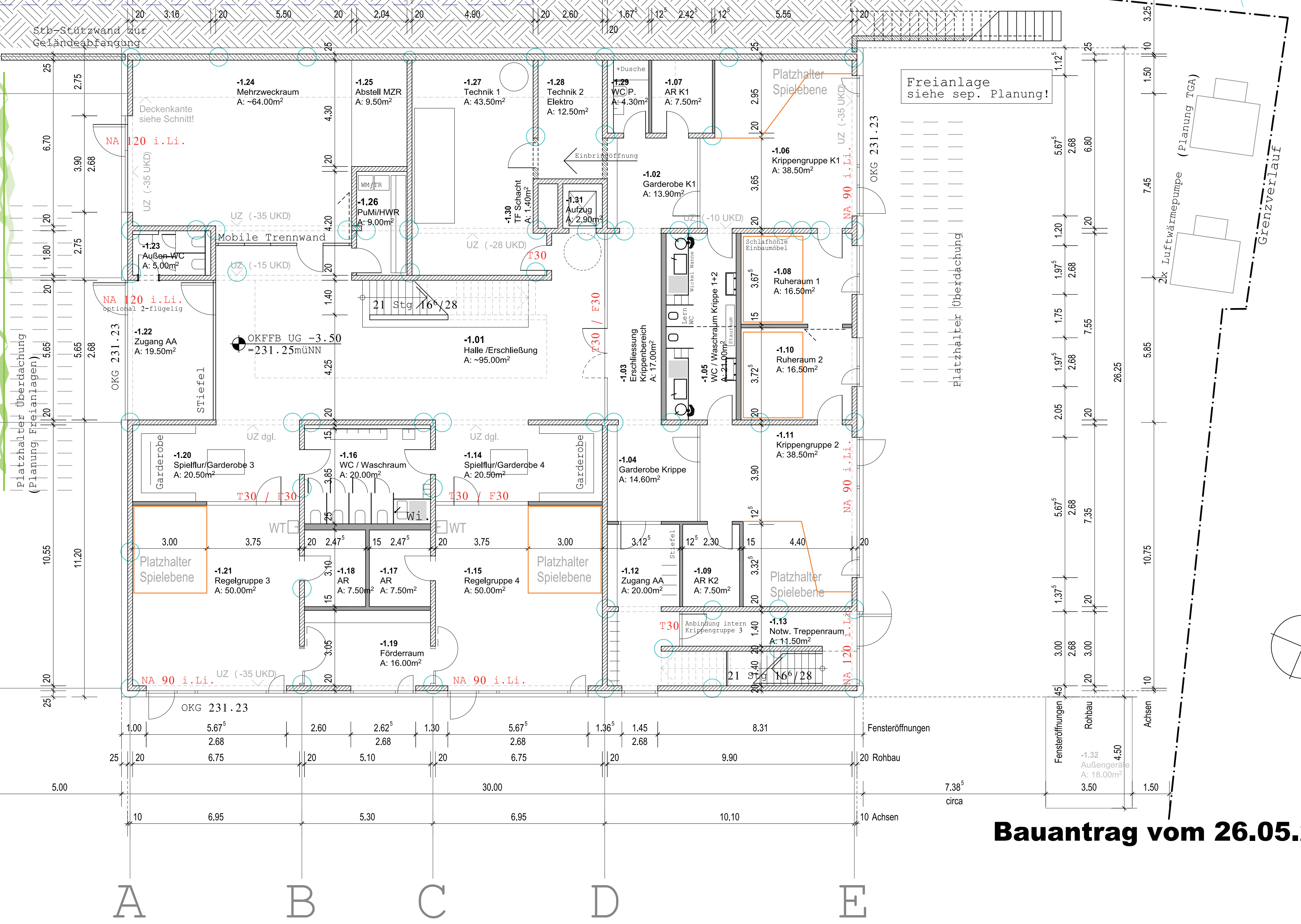


A B C D E

best. Turnhalle

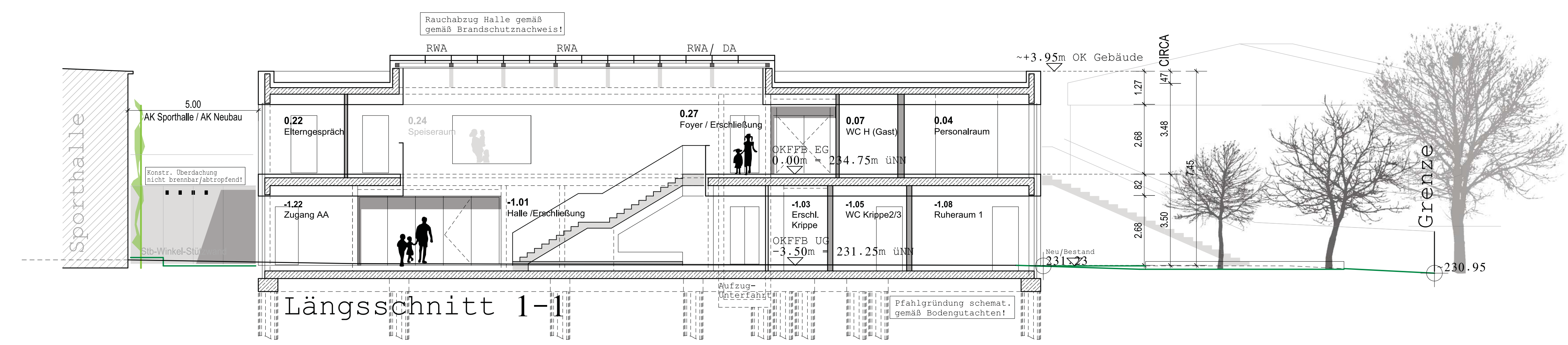
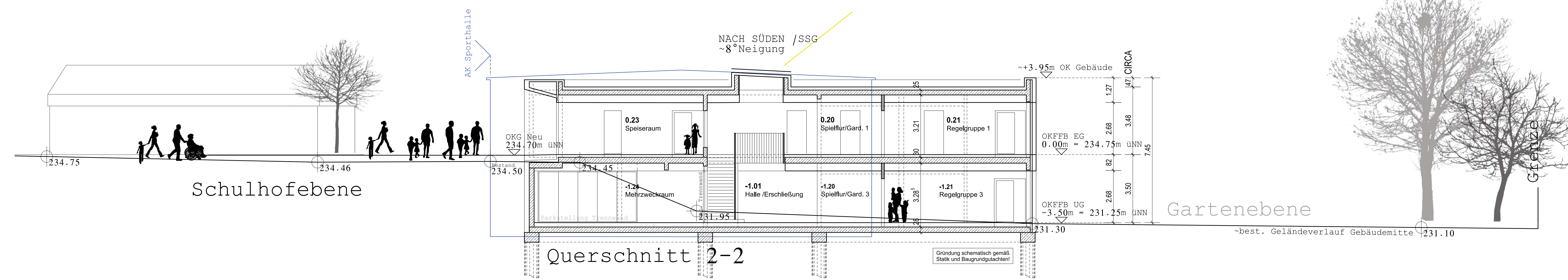
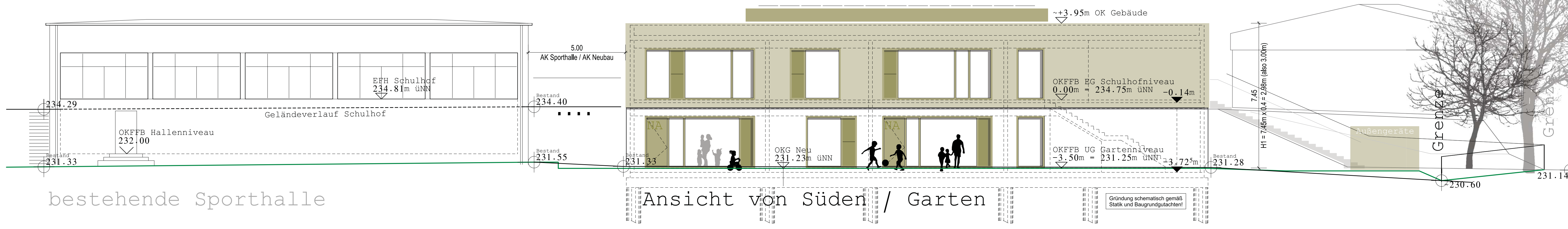
1
2
3
4
5

WANDBEGRÜNUNG

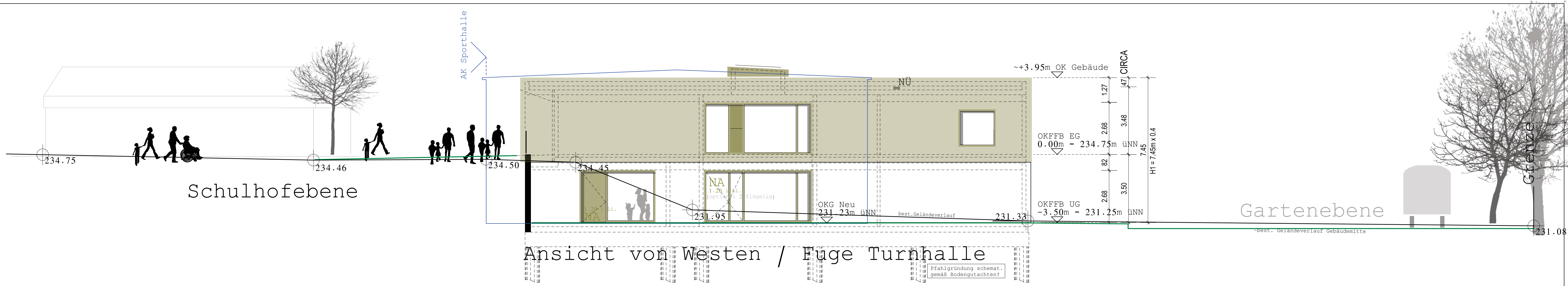


Gartenebene

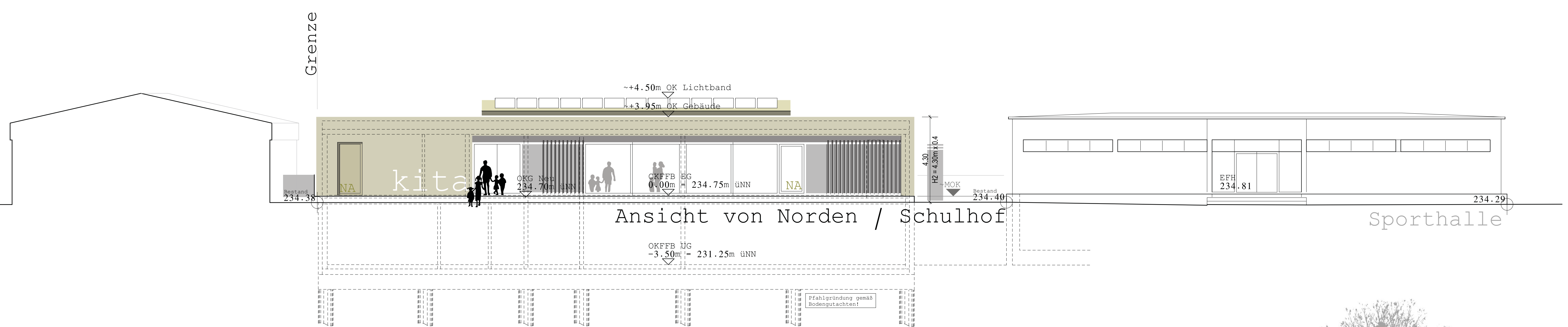
Bauantrag vom 26.05.23



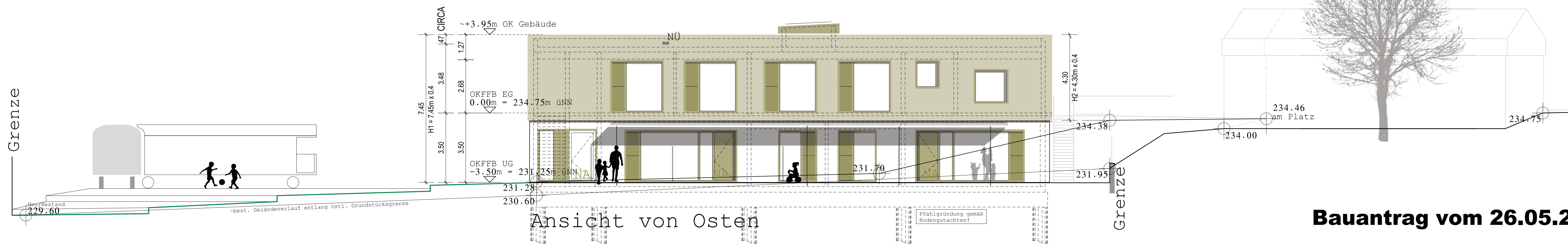
Bauantrag vom 26.05.23



Ansicht von Westen / Fuge Turnhalle



Ansicht von Norden / Schulhof






















Ansicht von Osten

Bauantrag vom 26.05.23



LEGENDE

-  Planungsumgriff ca. 2.830m²
-  Terrasse - Betonplatten 60x40
-  Vorplatz - Betonpflaster 30x20
-  Trittsteine - Betonplatten
-  Wassergebundene Wegedecke
-  Spielsand
-  Fallschutzkies 4/8
-  Ansaatfläche - Spielrasen RSM 2.3
-  Natursteinquader
-  Schifstelzen aus Holz
-  Mastleuchte
-  Pollerleuchte
-  Hofeinlauf 30x30
-  Fassaden- und Kastenrinne 15cm
-  Hecke - *Carpinus betulus*
-  Hochstamm STU 20-25 - Planung
-  Baum Bestand
-  Höhen - Planung
-  Höhen - Bestand